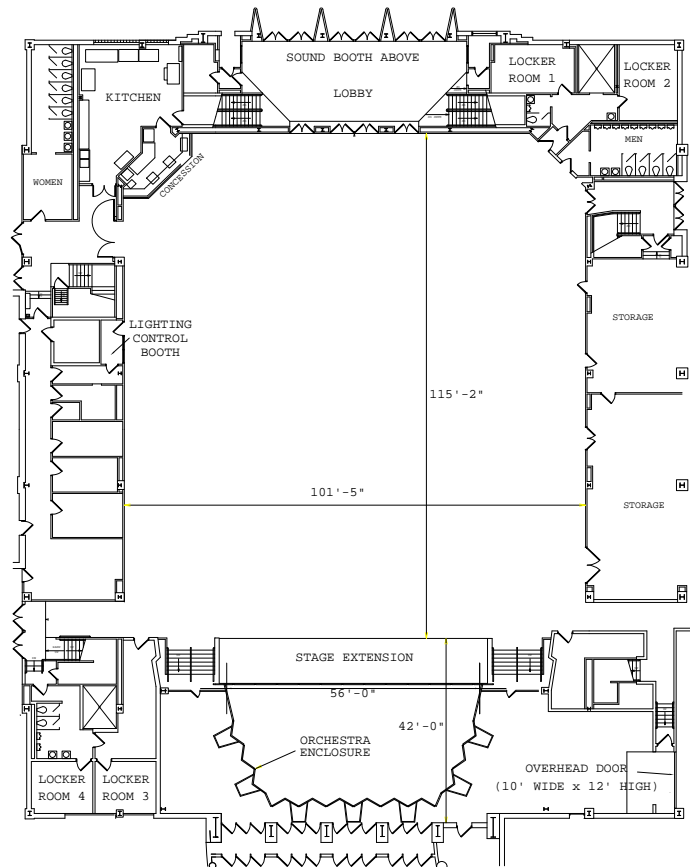


Donna Drews, <i>Executive Director</i>	(507) 328-2120	<a href="mailto:donna@mayociviccenter.com">donna@mayociviccenter.com</a>
Andy Krogstad, <i>Managing Director</i>	(507) 328-2121	<a href="mailto:andy@mayociviccenter.com">andy@mayociviccenter.com</a>
T.R. Wheeler, <i>Director of Event Operations</i>	(507) 328-2125	<a href="mailto:tr@mayociviccenter.com">tr@mayociviccenter.com</a>
Sam Durham, <i>Director of Marketing and Ticket Operations</i>	(507) 328-2127	<a href="mailto:sam@mayociviccenter.com">sam@mayociviccenter.com</a>
David Silker, <i>Director of Facility Operations</i>	(507) 328-2126	<a href="mailto:dave@mayociviccenter.com">dave@mayociviccenter.com</a>
Matt Esau, <i>Director of Sales</i>	(507) 328-2122	<a href="mailto:matt@mayociviccenter.com">matt@mayociviccenter.com</a>
Megan Gregory, <i>Event Sales Associate</i>	(507) 328-2123	<a href="mailto:megan@mayociviccenter.com">megan@mayociviccenter.com</a>

## AUDITORIUM



#### HOUSE INFORMATION

- Built in 1938, partially renovated in 1978, 1986, and again in 1999
- Balcony Seating: 1760 (106 obstructed behind proscenium)
- Main Floor Seating (Concert/Show): 1248
- Total Seating (Concert/Show): 2902 minus production and sight-line holds
- Permanent 40' deep x 80' wide stage at south end
- Wheelchair access on main floor only

#### STAGE MEASUREMENTS

- Proscenium opening height (floor to teaser): 18'-10"
- Proscenium opening width with curtain: 53'-0"
- Proscenium opening width without curtain: 56'-0"
- Stage depth at center from lip to back wall: 32'-0"
- Stage depth at center from lip to main curtain: 2'-0"
- Stage depth at center from main curtain to back wall: 30'-0"
- Stage extension depth: 10'-0"
- Stage extension width: 60'-0"
- Total stage depth with extension: 42'-0"
- Stage height from main floor to stage floor: 4'-0"
- Stage width from center to stage right wall: 65'-0"
- Stage width from center to stage left wall: 42'-0"
- Stage floor to removable orchestra ceiling shells: 22'-9"
- Stage floor is gray plywood material
- Additional dance (marley) flooring (gray or black) available upon request
- AutoCAD drawings available upon request

#### RIGGING

- 4 motorized battens
- Permanently mounted traveler and valance on line 1
- Permanently mounted electric distribution on lines 2,3,4
- Removable orchestra ceiling shell on lines 2,3,4
- High trim height of lines: 25'-0"
- Low trim height of lines: 4'-0"
- Arbor capacity of lines: 2000 pounds
- 12" box truss for backdrops, 27' from stage lip (37' from extension lip)

#### SOFT GOODS

- Blue grand curtain on line 1 operated by traveler (can be removed if necessary)
- Accompanying blue valance is permanent on line 1
- Additional black legs and borders available as necessary based on event schedule

#### LOAD-IN/LOAD-OUT

- Direct stage access from Arena loading docks
- If using the Arena loading docks, equipment will come off at dock height and travel directly to stage
- Arena loading docks (2) are 200' from the stage
- Arena loading dock doors are 9' wide by 9' high (Dock 10 has leveler, Dock 9 has dock plate)
- Narrowest passageway from Arena loading docks to the stage is 8'-0" wide and 10'-0" high
- Access to the main floor from the stage is via hydraulic lift (stage extension) or permanent concrete ramp
- If using the concrete ramp to access the main floor the narrowest passageway is 5'-0" wide and 7'-0" high
- Small carry-in equipment can come through standard entrances on the north side

#### DRESSING ROOMS/SHOWERS/MISCELLANEOUS BACKSTAGE

- Dressing rooms are shared with the Arena
- "Stars Dressing Room" has 2 separate dressing areas with showers, restrooms, and makeup counters and 1 common "lounge" area accommodating 6-8 people. The lounge area is carpeted and has easy chairs, couch, and end tables.
- "Officials Dressing Room" has a dressing area with shower, restroom and makeup counter and 1 "lounge" area accommodating 2-3 people. The lounge is carpeted and has a easy chair and table
- Both dressing rooms are accessible stage right through the overhead door (30' walk)
- Additional locker room facilities are available upon request and building use
- Production office located near the dressing rooms

#### SOUND SYSTEM (HOUSE)

- EAW stereo house sound installed in 1999
- Portable Allen & Heath GL2200-432 mixing console with 32 available microphone or line inputs, L/R output, 6 auxiliary outputs, and 4 sub-mix outputs
- All inputs and outputs available at Whirlwind breakout panels stage right, midway back on main floor, at the lip of the balcony, and balcony sound booth
- Permanent Soundcraft Spirit Folio mixing console with 12 microphone or line inputs, L/R output, 4 auxiliary outputs, and 4 sub-mixes located in the balcony sound booth (Allen & Heath can replace this console if necessary)
- 3 EAW 650 full range speakers hung audience right and audience left (6 total)
- 4 EAW SB1000 subs center hung
- 6 EAW MK2164 full range speakers for balcony side fill and stage fill
- 2 EAW ASR690 full range speakers for main floor front fill
- 4 Grundorf ST2423H full range speakers for back balcony delay
- Amplifiers consist of: PLX 3102, QSC 1500, Crest 4801, 7001, 8001, and 9001 models and are located in the catwalk above stage right
- Yamaha SPX990 effects processor
- T.C. Electronics M2000 effects processor
- XTA DP226 Processors for crossover, limiter, and delay

#### SOUND SYSTEM (HOUSE) CONTINUED

- XTA GQ600 dual 1/3 octave Equalizer for mains
- Rane 15 band 1/3 octave Equalizer for side and rear fills
- Tascam CD-500 CD/Cassette Player
- SM 58 vocal microphones
- SM 57 instrument microphones
- AT condenser microphones
- 2 Shure ULX P-4 UHF handheld and lavalier wireless microphones (additional available upon request and other building usage)
- 2 channel Clear Com communication (light booth, sound booth, spotlight platforms, stage right)
- Additional sound equipment upon request and availability
- Assisted listening devices available upon request for patrons

#### SOUND SYSTEM (MONITOR MIX)

- Allen & Heath GL2200-432 mixing console
- Whirlwind break-out location stage right
- 4 monitor mixes available
- Crest power amplifiers
- Full Band equalizers
- 6 EAW SM155e floor monitors (additional JBL wedges upon request and availability)

#### HOUSE LIGHTING

- Strand Environ system
- Dimmable incandescent fixtures
- Metal halide (mercury vapor) house lighting
- Controllable from stage right, balcony sound booth, and main floor lighting booth

#### STAGE LIGHTING/POWER

- ETC Sensor dimming rack
- (78) 20 amp hardwired dimmer circuits broken out as follows
  - 13-36 1<sup>st</sup> catwalk downstage of stage
  - 14, 16, 18, 20, 22, 24 2<sup>nd</sup> catwalk downstage of stage (duplicates of 1<sup>st</sup> catwalk)
  - 25, 27, 29, 31, 33, 35 2<sup>nd</sup> catwalk downstage of stage (duplicates of 1<sup>st</sup> catwalk)
  - AA, BB, CC, DD, EE built into permanent cloud (not usable, part of house lighting)
  - 59-76 1<sup>st</sup> motorized batten from downstage edge
  - 89-106 2<sup>nd</sup> motorized batten from downstage edge
  - 119-130 3<sup>rd</sup> motorized batten from downstage edge
- 24 channel ETC Express lighting console located in audience right lighting booth
- 4 Lycian 1275 Superstar 1.2k spot lights in permanent spotlight platfor

#### STAGE LIGHTING/POWER CONTINUED

- Lighting fixtures as follows (upon request and availability)
  - 27 – 575w ETC Source Four Pars hung within the ceiling orchestra shell for no color stage wash (shell removable independently from the lights)
  - 60+ 575w ETC Source Four Pars w/ lens kits
  - 12 – 575w 10° ETC Source Four Ellipsoidal
  - 20 – 575w 19° Strand Ellipsoidal
  - 15 – 575w 26° Strand Ellipsoidal
  - 15 – 575w 50° Strand Ellipsoidal
  - 25+ Par 64 WFL 1K
  - 8 – 575w 6 x 9 Altman Ellipsoidal (37° beam)
  - 8 – 575w 6 x 12 Altman Ellipsoidal (26° beam)
  - 6 – 575w 6 x 22 Altman Ellipsoidal (11° beam)
  - 6 – 575w 3.5Q Altman Ellipsoidal (48° beam)
- Cables, two-fers, and mults to accommodate most productions
- 2-400 amp 3 phase disconnects located downstage right (supply own pigtails)
- 1-100 amp 3 phase disconnect located upstage left (breakout service provided)

#### MISCELLANEOUS EQUIPMENT

- Forklift and Highlift
- 10' x 10' Fast Fold Front or Rear Projection Screen
- 15' x 20' Fast Fold Front Projection Screen
- 20' x 20' Rolldown Front Projection Screen
- 2 – 21' x 28' Fast Fold Front Projection Screen
- 2 – Upright Studio Piano
- 6' Baldwin Baby Grand Piano
- 9' Steinway Grand Concert Piano
- 7 Wenger 3 Step Folding Choir Risers
- 1 Wenger Portable Choir Shell
- 110' 20" box truss
- 30' 12" box truss
- CM Loadstar ½ and 1 ton motors available

#### STAGEHAND RULES & REGULATIONS

- All IATSE calls made through T.R. Wheeler
- 5 hour meal penalty
- 1 hour break must be given if on-site meal not provided
- ½ hour break given if on-site meal is provided
- Any Mayo Civic Center equipment being used (sound, lighting, forklift, etc.) must be operated by MCC or IATSE personnel
- 3 hour minimum for stagehands, loaders, pushers, etc.
- 4 hour minimum for riggers
- 1 ½ hourly rate for all legal holidays
- Riggers will not work within any other departments on the same call
- Other departments will cross over (example: loaders become stagehands)
- House light operator necessary for most events

DIRECTIONS TO THE MAYO CIVIC CENTER

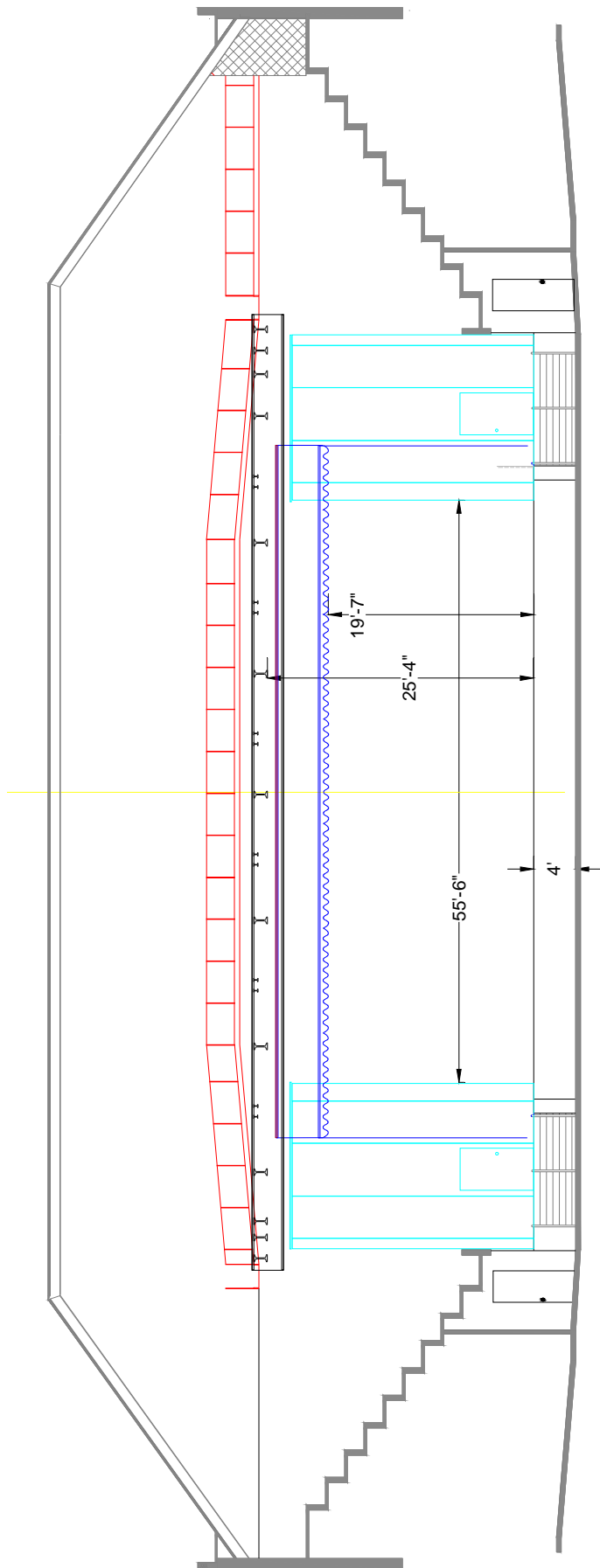
- From the North:
  - Highway 52 to Civic Center Drive
  - East on Civic Center Drive to Center Street
  - East on Center Street to security gate (loading dock area)
- From the South:
  - Highway 63 (Broadway) North to Center Street
  - East on Center Street 2 ½ blocks (loading dock area)
- From the East (Interstate 90):
  - Interstate 90 to Highway 52/Rochester Exit
  - Highway 52 North to Highway 63 (Broadway)
  - Highway 63 (Broadway) North to Center Street
  - East on Center Street 2 ½ blocks (loading dock area)
- From the West (Interstate 90):
  - Interstate 90 to Highway 63/Rochester Exit
  - Highway 63 North which becomes Broadway at Rochester city limits
  - Highway 63 (Broadway) North to Center Street
  - East on Center Street 2 ½ blocks (loading dock area)

LOCAL VENDORS

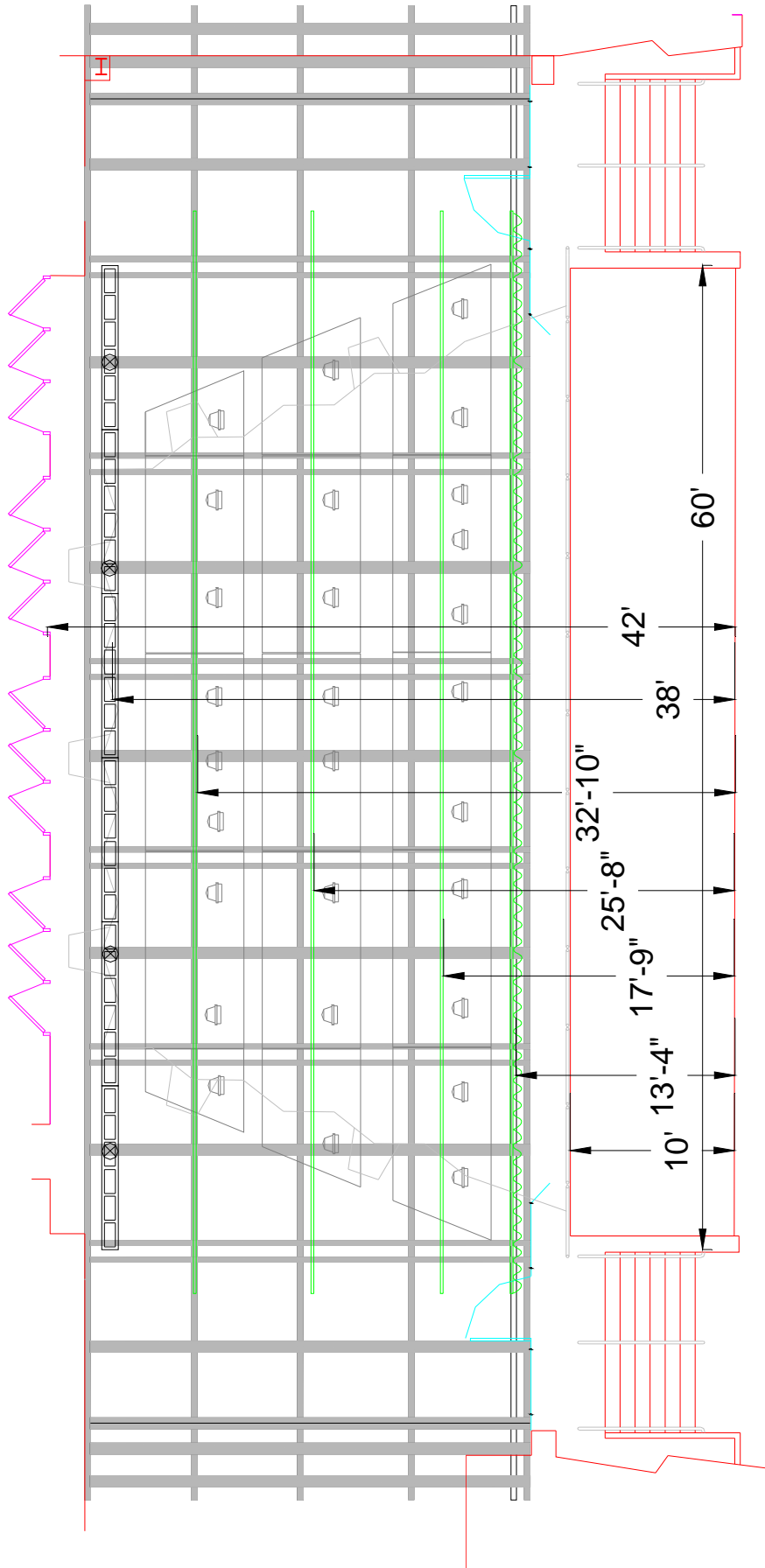
- |                               |                             |                |
|-------------------------------|-----------------------------|----------------|
| • General Physician or Clinic | Mayo Clinic                 | (507) 284-2511 |
|                               | Olmsted Medical Center      | (507) 288-3443 |
| • Chiropractor/Massage        | Massage Envy                | (507) 289-3689 |
|                               | Northgate Chiropractic      | (507) 285-1677 |
| • Dentist                     | Lake Side Dentistry         | (507) 282-8222 |
|                               | Family Dentist Tree         | (507) 288-1188 |
| • Florist                     | Flowers by Jerry            | (507) 289-3967 |
|                               | Renning's Flowers           | (507) 289-1818 |
| • Equipment Rental            | Rental Depot, Inc.          | (507) 288-2741 |
|                               | Rentex                      | (507) 292-8794 |
| • Copier/Fax Rental           | Tri-State Business Machines | (507) 285-1513 |
|                               | Metro Sales & Rental        | (507) 285-0039 |
| • Copies                      | Insty-Prints                | (507) 282-6112 |
|                               | Fedex Kinkos                | (507) 288-2233 |

LOCAL VENDORS (CONTINUED)

• Furniture Rental	E-Z Own	(507) 289-7899
	TGI Freitags	(507) 285-5956
• Banking	Wells Fargo Bank	(507) 285-2950
	US Bank	(507) 285-7900
• Transportation (Air)	American Airlines	(800) 433-7300
	Delta Airlines	(800) 221-1212
• Trans. (Cars)	Kuehn Rental Car	(507) 536-9800
	Hertz, Thrifty, Avis, & National also available	
• Transportation (Buses)	Rochester City Lines & Coaches	(800) 368-4874
(Airport Shuttle)	Go Rochester Direct	(507) 280-9270
(Limos)	Gold Crown Limousine	(507) 285-9528
• Hotels (connected via skyway)	Doubletree Hotel	(507) 281-8000
	Kahler Grand Hotel	(800) 533-1655
	Hilton Garden Inn	(507) 285-1234
	Holiday Inn Express Downtown	(507) 288-3231
• Hotels (not connected)	Courtyard by Marriott	(507) 536-0040
	Hampton Inn	(507) 287-9050
• Restaurants (connected via skyway)	Michaels	(507) 288-2020
	Pappageorge Pizza	(507) 288-2020
	Red Lobster	(507) 287-9710
	Chester's	(507) 424-1211
	Newts Pub	(507) 289-0577
	Victoria's Italian Cuisine	(507) 280-6232



Stage Elevation View



Stage Overhead View

