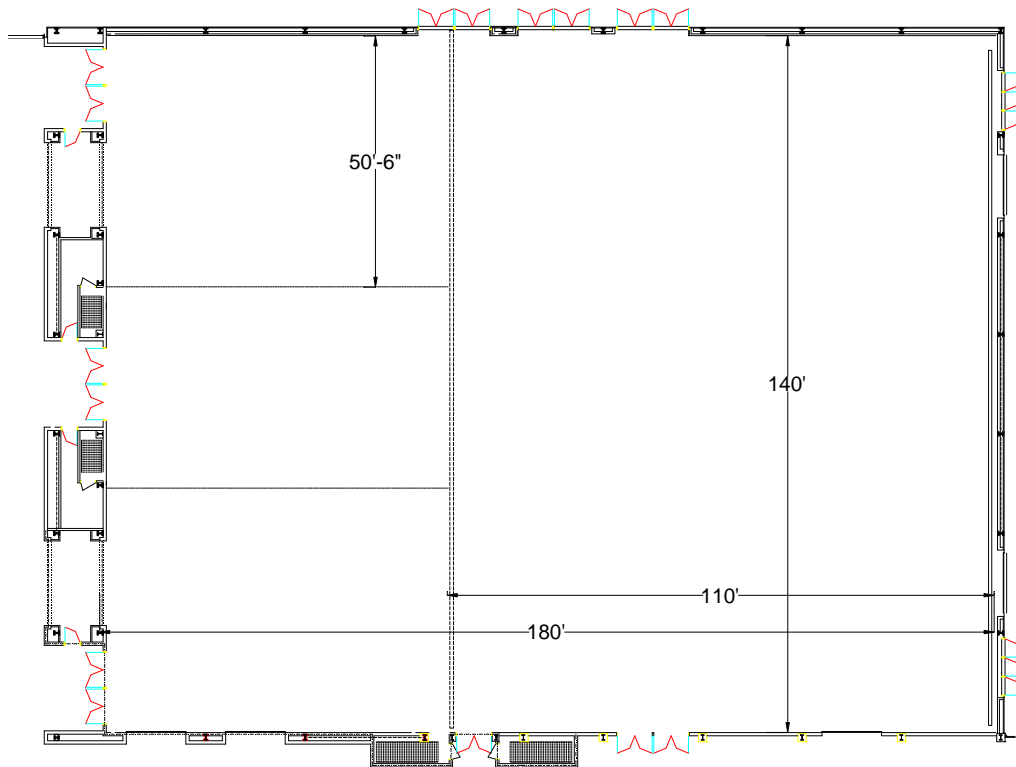


Donna Drews, <i>Executive Director</i>	(507) 328-2120	<a href="mailto:donna@mayociviccenter.com">donna@mayociviccenter.com</a>
Andy Krogstad, <i>Managing Director</i>	(507) 328-2121	<a href="mailto:andy@mayociviccenter.com">andy@mayociviccenter.com</a>
T.R. Wheeler, <i>Director of Event Operations</i>	(507) 328-2125	<a href="mailto:tr@mayociviccenter.com">tr@mayociviccenter.com</a>
Sam Durham, <i>Director of Marketing and Ticket Operations</i>	(507) 328-2127	<a href="mailto:sam@mayociviccenter.com">sam@mayociviccenter.com</a>
David Silker, <i>Director of Facility Operations</i>	(507) 328-2126	<a href="mailto:dave@mayociviccenter.com">dave@mayociviccenter.com</a>
Matt Esau, <i>Director of Sales</i>	(507) 328-2122	<a href="mailto:matt@mayociviccenter.com">matt@mayociviccenter.com</a>
Megan Gregory, <i>Event Sales Associate</i>	(507) 328-2123	<a href="mailto:megan@mayociviccenter.com">megan@mayociviccenter.com</a>

# ***EXHIBIT HALL***



#### HOUSE INFORMATION

- Built in 2001
- 25,200 square feet open concrete floor space
- Can be divided from 1 room up to 4 rooms
- Can accommodate (142 ) 10' x 10' vendor booths, banquet seating for 1300 people, theatre style seating for 2000 people, classroom seating for 1000 people or any combination of above
- No permanent stage
- Wheelchair access on main floor
- Control booth (audio & lighting) located on 2<sup>nd</sup> floor of west wall of Ex. Hall 2 w/ window openings
- Electrical power, water and air hook-ups available in floor

#### STAGE MEASUREMENTS

- Typical stage is built against floor to ceiling black curtain on east wall
- 40 sections of 4'x8'x4' Wenger portable staging
- 40 sections of 6'x8'x4' Sico portable staging
- Largest stage that can be built from above staging is 40' deep x 80' wide
- Steps and railing to accommodate most events
- Stage floor to low steel is 28'
- Other stage heights are also available depending upon building usage
- Stage deck of Wenger staging is brown hardboard surface
- Stage deck of Sico staging is black polyvinyl surface
- Black stage skirting
- Additional dance (marley) flooring (gray or black) available upon request
- AutoCAD drawings available upon request

#### RIGGING

- Low steel runs from north to south every 10'
- 32' from floor to low steel

#### SOFT GOODS

- Floor to ceiling black curtain on east wall, hung on 20" box truss

#### LOAD-IN/LOAD-OUT

- Direct stage access to the main floor from Exhibit Hall loading docks (#5 & #6)
- Loading docks (2) are 100' from typical stage
- Arena loading dock doors are 9' wide by 9' high (both have leveling plates)
- Narrowest passageway from loading docks to the stage is 9'-0" wide and 9'-0" high
- Access to the stage deck from the main floor is by portable ramp or forklift
- Access also to main floor using the overhead doors (#3 & #4) from outside (12'w x 14'h)
- Small carry-in equipment can come through standard entrances on the north side from patio

#### DRESSING ROOMS/SHOWERS/MISCELLANEOUS BACKSTAGE

- Dressing rooms are shared with the Auditorium & Arena
- “Stars Dressing Room” has 2 separate dressing areas with showers, restrooms, and makeup counters and 1 common “lounge” area accommodating 6-8 people. The lounge area is carpeted and has easy chairs, couch, and end tables.
- “Officials Dressing Room” has a dressing area with shower, restroom and makeup counter and 1 “lounge” area accommodating 2-3 people. The lounge is carpeted and has easy chairs and table
- Both dressing rooms are accessible backstage left
- 4 additional locker room facilities with showers, restrooms, and mirrors are located behind the Arena
- Production office near dressing rooms
- Dressing rooms are available upon request and building use

#### SOUND SYSTEM (HOUSE)

- Monaural house sound system, with Lectrosonics auto mixer system which can be separated or combined through Ex. Hall 1, 2, 3, 4 and North Lobby
- Permanent Allen & Heath GL2200 mixing console with 32 available microphone or line inputs, L/R output, 4 auxiliary outputs, and 2 sub-mix outputs
- Whirlwind 44 channel breakout on east wall of Ex. Hall 4 and west wall of Ex. Hall 2 with ties into patch bay in the control booth upstairs
- Patch bay to balanced inputs around perimeter of Ex. Hall and North Lobby
- 56 Electro Voice SX100, 2-way full range speaker system on grid pattern in ceiling
- All amplifiers are QSC
- Sony CD player, mini-disk recorder/player and dual cassette recorder/player
- SM 58 vocal microphones
- SM 57 instrument microphones
- AT condenser microphones
- 2 Shure ULX P-4 UHF handheld and lavalier wireless microphones (additional available upon request and other building usage)
- 2 channel Clear Com communication with permanent locations (patchable anywhere) in the control booth
- Assisted listening devices available upon request for patrons
- Additional sound equipment upon request and availability

#### SOUND SYSTEM (MONITOR MIX)

- Allen & Heath GL2200-432 mixing console
- Splitter snake
- 4 monitor mixes available
- Crest power amplifiers
- Full band Equalizers
- 6 EAW SM155e floor monitors (additional JBL wedges upon request and availability)

#### HOUSE LIGHTING

- Dimmable incandescent house lighting
- Metal halide (mercury vapor) house lighting
- Colortran Innovater 24/48 lighting console, controllable from control booth

#### STAGE LIGHTING/POWER

- Portable Strand dimming packs with DMX protocol: 3 Strand CD 80 Dimmers (12ch., 2.4k/ch.) includes a Motion Labs 3phase Power Distro w/ 400a disconnect (camlock in/out)
- (4) Portable Dimmer bars Rosco 6 ch. Model # IPS-DS-1206 w/ 1.2k/ch. System controlled via network protocol converter cat5/DMX
- Portable 24 or 48 channel Strand MX lighting consoles
- 2 Lycian 1209 spot lights available upon request
- Lighting fixtures as follows (upon request and availability)
  - 60+ 575w ETC Source Four Pars w/ lens kits
  - 12 – 575w 10° ETC Source Four Ellipsoidal
  - 20 – 575w 19° Strand Ellipsoidal
  - 15 – 575w 26° Strand Ellipsoidal
  - 15 – 575w 50° Strand Ellipsoidal
  - 25+ Par 64 WFL 1K
  - 8 – 575w 6 x 9 Altman Ellipsoidal (37° beam)
  - 8 – 575w 6 x 12 Altman Ellipsoidal (26° beam)
  - 6 – 575w 6 x 22 Altman Ellipsoidal (11° beam)
  - 6 – 575w 3.5Q Altman Ellipsoidal (48° beam)
- Cables, two-fers, and mults to accommodate most productions
- 1-600 amp 3 phase and 1-400 amp 3 phase disconnect located in loading dock area approximately 100' from typical stage (supply own pigtails)

#### MISCELLANEOUS EQUIPMENT

- Forklift and Highlift
- 10' x 10' Fast Fold Front or Rear Projection Screen
- 15' x 20' Fast Fold Front Projection Screen
- 20' x 20' Rolldown Front Projection Screen
- 2 – 21' x 28' Fast Fold Front Projection Screen
- 2 – Upright Studio Piano
- 6' Baldwin Baby Grand Piano
- 9' Steinway Grand Concert Piano
- 7 Wenger 3 Step Folding Choir Risers
- 1 Wenger Portable Choir Shell
- 110' 20" box truss and 30' 12" box truss
- CM Loadstar ½ and 1 ton motors available

#### STAGEHAND RULES & REGULATIONS

- All IATSE calls made through T.R. Wheeler
- 5 hour meal penalty
- 1 hour break must be given if on-site meal not provided
- ½ hour break given if on-site meal is provided
- Any Mayo Civic Center equipment being used (sound, lighting, forklift, etc.) must be operated by MCC or IATSE personnel
- 3 hour minimum for stagehands, loaders, pushers, etc.
- 4 hour minimum for riggers
- 1 ½ hourly rate for all legal holidays
- Riggers will not work within any other departments on the same call
- Other departments will cross over (example: loaders become stagehands)
- House light operator necessary for most events

DIRECTIONS TO THE MAYO CIVIC CENTER

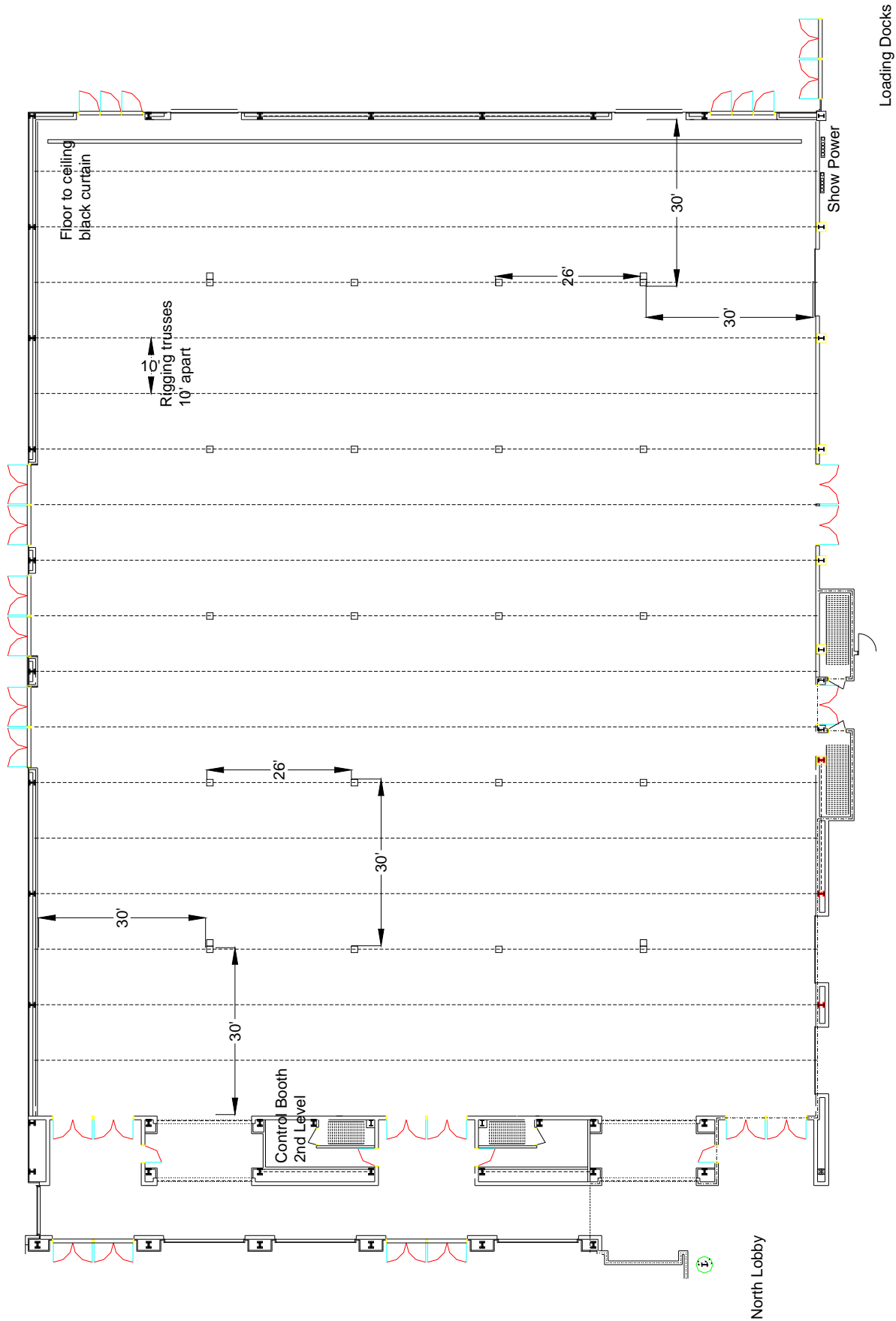
- From the North:
  - Highway 52 to Civic Center Drive
  - East on Civic Center Drive to Center Street
  - East on Center Street to security gate (loading dock area)
- From the South:
  - Highway 63 (Broadway) North to Center Street
  - East on Center Street 2 ½ blocks (loading dock area)
- From the East (Interstate 90):
  - Interstate 90 to Highway 52/Rochester Exit
  - Highway 52 North to Highway 63 (Broadway)
  - Highway 63 (Broadway) North to Center Street
  - East on Center Street 2 ½ blocks (loading dock area)
- From the West (Interstate 90):
  - Interstate 90 to Highway 63/Rochester Exit
  - Highway 63 North which becomes Broadway at Rochester city limits
  - Highway 63 (Broadway) North to Center Street
  - East on Center Street 2 ½ blocks (loading dock area)

LOCAL VENDORS

- |                               |                             |                |
|-------------------------------|-----------------------------|----------------|
| • General Physician or Clinic | Mayo Clinic                 | (507) 284-2511 |
|                               | Olmsted Medical Center      | (507) 288-3443 |
| • Chiropractor/Massage        | Massage Envy                | (507) 289-3689 |
|                               | Northgate Chiropractic      | (507) 285-1677 |
| • Dentist                     | Lake Side Dentistry         | (507) 282-8222 |
|                               | Family Dentist Tree         | (507) 288-1188 |
| • Florist                     | Flowers by Jerry            | (507) 289-3967 |
|                               | Renning's Flowers           | (507) 289-1818 |
| • Equipment Rental            | Rental Depot, Inc.          | (507) 288-2741 |
|                               | Rentex                      | (507) 292-8794 |
| • Copier/Fax Rental           | Tri-State Business Machines | (507) 285-1513 |
|                               | Metro Sales & Rental        | (507) 285-0039 |
| • Copies                      | Insty-Prints                | (507) 282-6112 |
|                               | Fedex Kinkos                | (507) 288-2233 |

LOCAL VENDORS (CONTINUED)

• Furniture Rental	E-Z Own	(507) 289-7899
	TGI Freitags	(507) 285-5956
• Banking	Wells Fargo Bank	(507) 285-2950
	US Bank	(507) 285-7900
• Transportation (Air)	American Airlines	(800) 433-7300
	Delta Airlines	(800) 221-1212
• Trans. (Cars)	Kuehn Rental Car	(507) 536-9800
	Hertz, Thrifty, Avis, & National also available	
• Transportation (Buses)	Rochester City Lines & Coaches	(800) 368-4874
(Airport Shuttle)	Go Rochester Direct	(507) 280-9270
(Limos)	Gold Crown Limousine	(507) 285-9528
• Hotels (connected via skyway)	Doubletree Hotel	(507) 281-8000
	Kahler Grand Hotel	(800) 533-1655
	Hilton Garden Inn	(507) 285-1234
	Holiday Inn Express Downtown	(507) 288-3231
• Hotels (not connected)	Courtyard by Marriott	(507) 536-0040
	Hampton Inn	(507) 287-9050
• Restaurants (connected via skyway)	Michaels	(507) 288-2020
	Pappageorge Pizza	(507) 288-2020
	Red Lobster	(507) 287-9710
	Chester's	(507) 424-1211
	Newts Pub	(507) 289-0577
	Victoria's Italian Cuisine	(507) 280-6232



Loading Docks