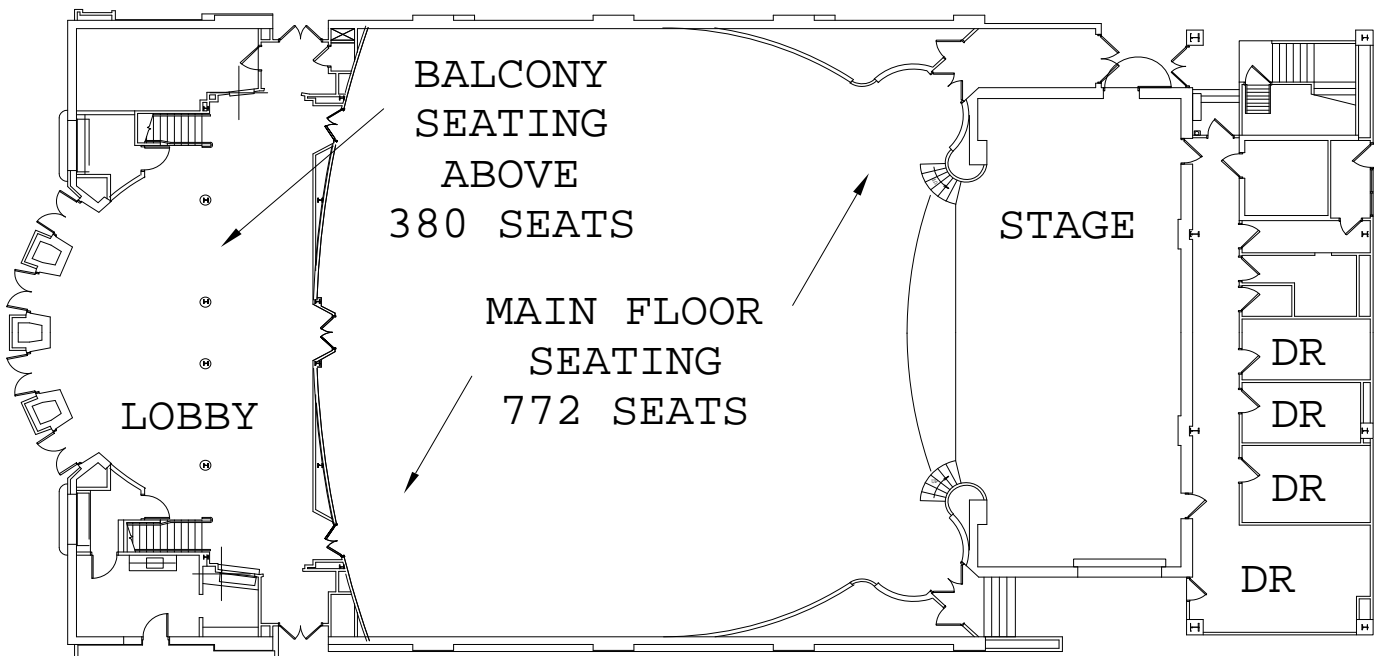


Donna Drews, <i>Executive Director</i>	(507) 328-2120	donna@mayociviccenter.com
Andy Krogstad, <i>Managing Director</i>	(507) 328-2121	andy@mayociviccenter.com
T.R. Wheeler, <i>Director of Event Operations</i>	(507) 328-2125	tr@mayociviccenter.com
Sam Durham, <i>Director of Marketing and Ticket Operations</i>	(507) 328-2127	sam@mayociviccenter.com
David Silker, <i>Director of Facility Operations</i>	(507) 328-2126	dave@mayociviccenter.com
Matt Esau, <i>Director of Sales</i>	(507) 328-2122	matt@mayociviccenter.com
Megan Gregory, <i>Event Sales Associate</i>	(507) 328-2123	megan@mayociviccenter.com

PRESENTATION HALL



HOUSE INFORMATION

- Built in 1938, renovated in 1978 and again in 1997
- Balcony Seating: 380
- Main Floor Seating: 792
- Total Seating: 1172
- Wheelchair access on main floor and balcony
- Sound, lighting, spot lights, and projection platforms located in control booth at the back of the balcony approximately 110' from the stage lip—No obstructions for stage viewing

STAGE MEASUREMENTS

- Proscenium opening height: 22'-0"
- Proscenium opening width: 37'-9"
- Stage depth at center from lip to back wall: 27'-4"
- Stage depth at center from lip to main curtain: 4'-4"
- Stage depth at center from main curtain to back wall: 23'-0"
- Stage height from covered orchestra pit to stage floor: 4'-0"
- Stage width from center to stage right locking rail: 27'-0"
- Stage width from center to stage left wall: 31'-0"
- Stage width from stage right edge of proscenium opening to locking rail: 7'-0"
- Stage width from stage left edge of proscenium opening to wall: 10'
- Only stage obstruction is locking rail stage right
- Stage floor is a finished blonde, gym type
- Marley dance flooring (gray or black) available upon request
- 30" deep orchestra pit that extends 6' out from stage lip
- Orchestra pit cover available at main floor height or at stage height to create a stage extension

RIGGING

- Counterweight system consisting of 26 lines
- High trim height of lines 1-7: 32'-3"
- High trim height of lines 8-26: 42'-0"
- Low trim height of all lines: 5'-0"
- Arbor capacity lines 1-26: 1500 pounds
- Permanently mounted electric distribution on lines 5, 16, and 21
- Motorized batten (FOH) approximately 4' down stage of stage lip (over orchestra pit)
- Arbor capacity of FOH batten: 800 pounds
- Permanently mounted electric on FOH batten
- Removable mounted orchestra ceiling shells on lines 10, 20, and 24

SOFT GOODS

- Burgundy grand curtain on line 2 operated by traveler or can be flown in and out
- Gold curtain on line 8 operated by traveler or can be flown in and out
- White cyc curtain on line 25
- 3 black borders and/or legs can be hung on any line
- 1 black full stage curtain (7 legs together) can be hung on any line, typically on line 26

LOAD-IN/LOAD-OUT

- Direct stage access somewhat limited, but achievable
- Double door entrance from front circle, stage level, equipment must be ramped off the truck
- Narrowest passageway from front circle to the stage is 2'-11" wide and 6'-10" high
- (2) Arena loading dock doors are 9' wide by 9' high (Dock 10 has leveler, Dock 9 has dock plate) and are 150 yards from stage (access is dependent upon building use)
- Narrowest passageway from Arena loading docks to the stage is 5' wide and 7' high
- If using the Arena loading docks, equipment will come off at dock height and travel down a permanent ramp with no other portable ramps or elevators necessary before arriving on stage deck

DRESSING ROOMS/SHOWERS/MISCELLANEOUS BACKSTAGE

- 3 dressing rooms can accommodate 4-5 people each available at stage level behind stage
- 1 large 5 person dressing room or "green room" area available at stage level behind stage
- All 4 rooms are equipped with mirrors, make-up lights, clothes racks, and easy chairs
- 1 unisex restroom in the same area as dressing rooms equipped with toilet and sink only
- Showers are located in other parts of the building with availability based on building use

SOUND SYSTEM (HOUSE)

- Monaural house sound
- Permanent Mackie SR24-4 mixing console with 16 available microphone or line inputs (remaining inputs are dedicated), L/R output, 6 auxiliary outputs, and 4 sub-mix outputs
- All inputs and outputs available at a Whirlwind breakout panel stage right
- Permanent mixing console is located in the balcony control booth
- Portable mix console space available on the main floor by removing pre-determined seats
- Center hung cluster (Community – (1) SBS 22 & (2) SLS 920) with distributed balcony speakers (Community (3) SLS 915) and front fill speakers (EAW – mini wedge)
- Crown power amplifiers
- Community DSC42 Digital Control System
- White 4700-2BL Dual Channel Programmable 1/3 octave EQ (preset for house, outboard EQ available upon request)
- Panasonic DAT player/recorder
- Tascam cassette deck
- Denon CD player
- SM 58 vocal microphones
- SM 57 instrument microphones
- Crown CM700 condenser microphones
- 2 Shure ULX P-4 UHF handheld and lavalier wireless microphones (additional available upon request and other building usage)
- 2 channel Clear Com communication (booth, stage right & left, backstage)
- Backstage monitors with volume control
- Vestibule monitor with volume control
- Additional sound equipment available upon request
- Assisted listening devices available upon request for patrons

SOUND SYSTEM (MONITOR MIX)

- Allen & Heath GL2200-432 mixing console
- Splitter snake
- 4 monitor mixes available
- Crest power amplifiers
- Full band equalizers
- 6 EAW SM155e floor monitors (additional JBL wedges upon request and availability)

HOUSE LIGHTING

- Strand Environ system
- All lights are dimmable incandescent fixtures
- Controllable from stage right and balcony control booth

STAGE LIGHTING/POWER

- Strand CD80 Supervisor rack with DMX protocol
- 96 - 2.4k dimmers with 800 μ s rise time
- 96 - 20 amp hardwired dimmer circuits broken out as follows (all circuits are edison plugs)
 - 1-8 balcony rail audience left
 - 9-16 balcony rail audience right
 - 17-26 front of house motorized batten
 - 27-46 third electric
 - 47-62 second electric
 - 63-86 first electric
 - 87-91 downstage left wall
 - 92-96 downstage right wall
- Colortran Innovator 24/48 channel lighting console located in balcony control booth
- 2 Lycian 1209 spot lights (5600 K color temperature) located in balcony control booth
- Lighting fixtures as follows (upon request and availability)
 - 60+ 575w ETC Source Four Par (10 pre-hung on FOH, 20 on 1st electric, & 20 on 2nd electric for no color stage wash)
 - 12 – 575w 10° ETC Source Four Ellipsoidal
 - 20 – 575w 19° Strand Ellipsoidal
 - 15 – 575w 26° Strand Ellipsoidal
 - 15 – 575w 50° Strand Ellipsoidal
 - 25+ Par 64 WFL 1K
 - 8 – 575w 6 x 9 Altman Ellipsoidal (37° beam)
 - 8 – 575w 6 x 12 Altman Ellipsoidal (26° beam)
 - 6 – 575w 6 x 22 Altman Ellipsoidal (11° beam)
 - 6 – 575w 3.5Q Altman Ellipsoidal (48° beam)
 - 5 – 3 section Altman Sky Cyc (1K from each section, 1.5K available upon request)
- 2 lighting trees that can be set in the balcony
- Cables, two-fers, and mults to accommodate most productions
- 1-400 amp 3 phase disconnect located in the backstage area approximately 50' from downstage edge (supply own pigtails)
- 1-60 amp 3 phase disconnect located downstage right (breakout service provided)

MISCELLANEOUS EQUIPMENT

- Forklift and Highlift
- 10' x 10' Fast Fold Front or Rear Projection Screen
- 15' x 20' Fast Fold Front Projection Screen
- 20' x 20' Rolldown Front Projection Screen
- 2 – 21' x 28' Fast Fold Front Projection Screen
- 2 – Upright Studio Piano
- 6' Baldwin Baby Grand Piano
- 9' Steinway Grand Concert Piano
- 7 Wenger 3 Step Folding Choir Risers
- 1 Wenger Portable Choir Shell

STAGEHAND RULES & REGULATIONS

- All IATSE calls made through T.R. Wheeler
- 5 hour meal penalty
- 1 hour break must be given if on-site meal not provided
- ½ hour break given if on-site meal is provided
- Any Mayo Civic Center equipment being used (sound, lighting, forklift, etc.) must be operated by MCC or IATSE personnel
- 3 hour minimum for stagehands, loaders, pushers, etc.
- 4 hour minimum for riggers
- 1 ½ hourly rate for all legal holidays
- Riggers will not work within any other departments on the same call
- Other departments will cross over (example: loaders become stagehands)
- House light operator necessary for most events

DIRECTIONS TO THE MAYO CIVIC CENTER

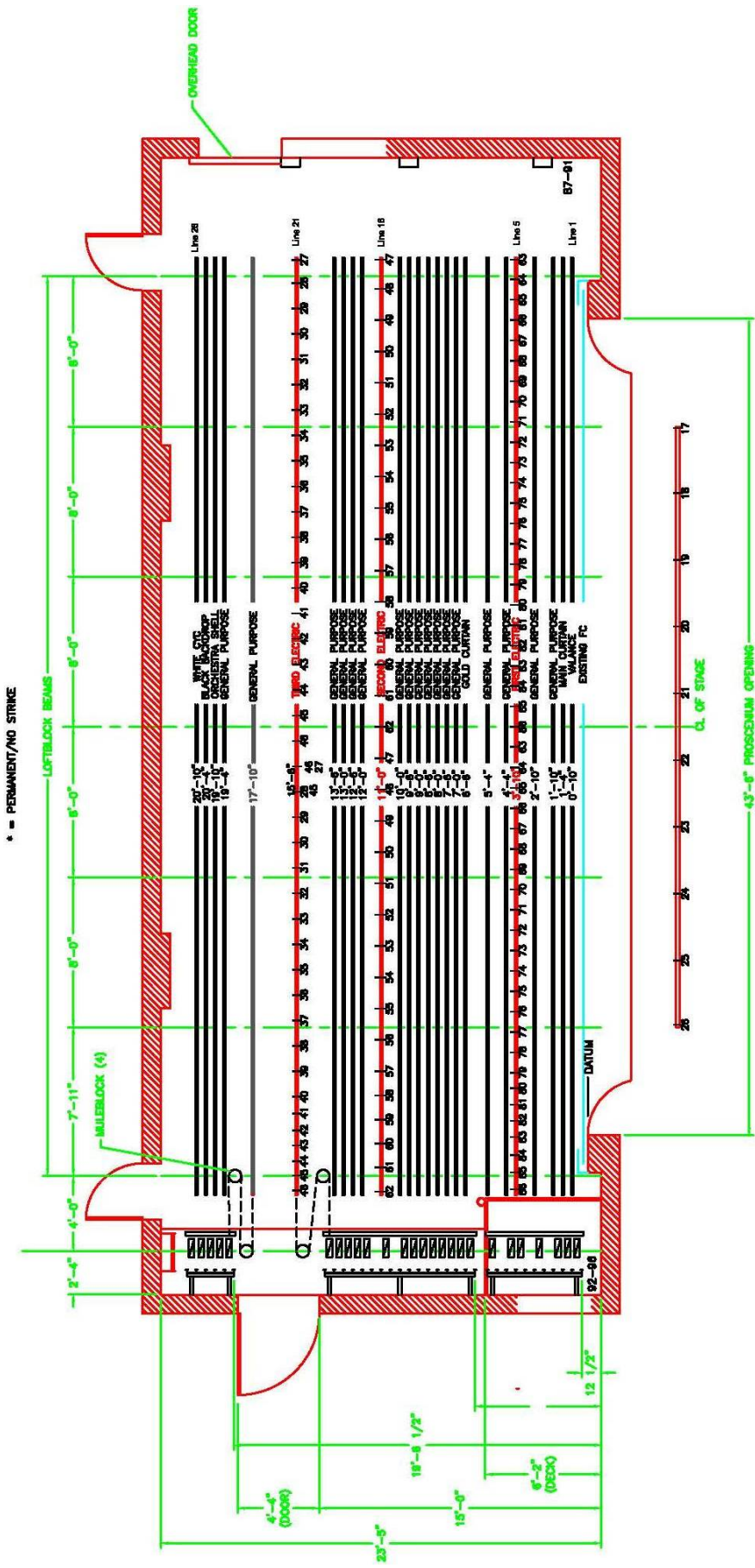
- From the North:
 - Highway 52 to Civic Center Drive
 - East on Civic Center Drive to Center Street
 - East on Center Street to security gate (loading dock area)
- From the South:
 - Highway 63 (Broadway) North to Center Street
 - East on Center Street 2 ½ blocks (loading dock area)
- From the East (Interstate 90):
 - Interstate 90 to Highway 52/Rochester Exit
 - Highway 52 North to Highway 63 (Broadway)
 - Highway 63 (Broadway) North to Center Street
 - East on Center Street 2 ½ blocks (loading dock area)
- From the West (Interstate 90):
 - Interstate 90 to Highway 63/Rochester Exit
 - Highway 63 North which becomes Broadway at Rochester city limits
 - Highway 63 (Broadway) North to Center Street
 - East on Center Street 2 ½ blocks (loading dock area)

LOCAL VENDORS

• General Physician or Clinic	Mayo Clinic	(507) 284-2511
	Olmsted Medical Center	(507) 288-3443
• Chiropractor/Massage	Massage Envy	(507) 289-3689
	Northgate Chiropractic	(507) 285-1677
• Dentist	Lake Side Dentistry	(507) 282-8222
	Family Dentist Tree	(507) 288-1188
• Florist	Flowers by Jerry	(507) 289-3967
	Renning's Flowers	(507) 289-1818
• Equipment Rental	Rental Depot, Inc.	(507) 288-2741
	Rentex	(507) 292-8794
• Copier/Fax Rental	Tri-State Business Machines	(507) 285-1513
	Metro Sales & Rental	(507) 285-0039
• Copies	Insty-Prints	(507) 282-6112
	Fedex Kinkos	(507) 288-2233
• Furniture Rental	E-Z Own	(507) 289-7899
	TGI Freitags	(507) 285-5956
• Banking	Wells Fargo Bank	(507) 285-2950
	US Bank	(507) 285-7900
• Transportation (Air)	American Airlines	(800) 433-7300
	Delta Airlines	(800) 221-1212
• Trans. (Cars)	Kuehn Rental Car	(507) 536-9800
	Hertz, Thrifty, Avis, & National also available	
• Transportation (Buses) (Airport Shuttle)	Rochester City Lines & Coaches	(800) 368-4874
	Go Rochester Direct	(507) 280-9270
(Limos)	Gold Crown Limousine	(507) 285-9528

LOCAL VENDORS (CONTINUED)

• Hotels (connected via skyway)	Doubletree Hotel	(507) 281-8000
	Kahler Grand Hotel	(800) 533-1655
	Hilton Garden Inn	(507) 285-1234
	Holiday Inn Express Downtown	(507) 288-3231
• Hotels (not connected)	Courtyard by Marriott	(507) 536-0040
	Hampton Inn	(507) 287-9050
• Restaurants (connected via skyway)	Michaels	(507) 288-2020
	Pappageorge Pizza	(507) 288-2020
	Red Lobster	(507) 287-9710
	Chester's	(507) 424-1211
	Newts Pub	(507) 289-0577
	Victoria's Italian Cuisine	(507) 280-6232



* = PERMANENT/NO STRIKE

PLAN VIEW - RAIL SCHEDULE & CIRCUIT PLOT

SCALE: 1/4"=1'-0"

STAGE EQUIPMENT SCHEDULE

SET NO.	DESCRIPTION	DATUM TO CL HDBLK	DATUM TO CL SET
1	*VALANCE	0'-7"	0'-10"
2	*MAIN CURTAIN	1'-1"	1'-4"
3	GENERAL PURPOSE	1'-7"	1'-10"
4	GENERAL PURPOSE	2'-1"	2'-10"
5	*FIRST ELECTRIC	3'-1"	3'-10"
6	SCREEN	4'-1"	4'-4"
7	GENERAL PURPOSE	5'-1"	5'-4"
8	*GOLD TRAVELER	6'-3"	6'-6"
9	GENERAL PURPOSE	6'-9"	7'-0"
10	*ORCHESTRA CEILING	7'-3"	7'-6"
11	GENERAL PURPOSE	7'-9"	8'-0"
12	GENERAL PURPOSE	8'-3"	8'-6"
13	GENERAL PURPOSE	8'-9"	9'-0"
14	GENERAL PURPOSE	9'-3"	9'-6"
15	GENERAL PURPOSE	9'-9"	10'-0"
16	*SECOND ELECTRIC	10'-9"	11'-0"
17	GENERAL PURPOSE	11'-9"	12'-0"
18	GENERAL PURPOSE	12'-3"	12'-6"
19	GENERAL PURPOSE	12'-9"	13'-0"
20	*ORCHESTRA CEILING	13'-3"	13'-6"
21	*THIRD ELECTRIC	13'-9"	15'-6"
22	GENERAL PURPOSE	19'-1"	17'-10"
23	GENERAL PURPOSE	19'-7"	19'-4"
24	ORCHESTRA CEILING	20'-1"	19'-10"
25	BLACK CURTAIN	20'-7"	20'-4"
26	WHITE CYC	21'-1"	20'-10"

* = PERMANENT/NO STRIKE

